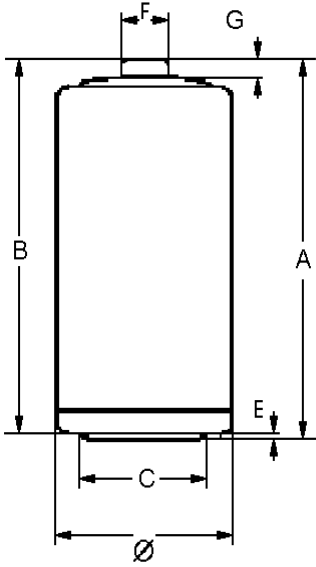


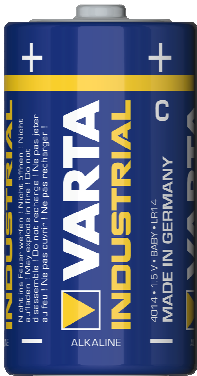
REF : PILE_LR14_BT20



Designation IEC	LR14
System	Zn-MnO ₂ (Alkaline)
Shelf Life (Coding)*	10 years
Nominal Voltage [V]	1.5
Typical Capacity C [mAh]	7800 (discharge with high-resistance)
Permissible Temperature Range	- 20 °C ... 50 °C
Weight, approx. [g]	65,8
Volume [ccm]	26

Dimensions [mm]	min:	max:
Ø	24.9	26.2
A	-	50.0
B	48.6	-
C	13.0	-
E	-	0.9
F	-	7.5
G	1.5	-

Typical Capacities (at 20°C)



Discharge Type	Load	End Voltage[V]	0.9
4M/H,8H/D,7D/W	3.9 Ω	Time [h]	22,2
Portable lighting		Capacity [Ah]	6,64
		Energy [Wh]	7,80
Discharge Type	Load	End Voltage[V]	0.8
1H/D,7D/W	3.9 Ω	Time [h]	24,8
Toy		Capacity [Ah]	6,88
		Energy [Wh]	7,53
Discharge Type	Load	End Voltage[V]	0.9
4H/D,7D/W	20 Ω	Time [h]	122,5
Radio		Capacity [Ah]	7,48
		Energy [Wh]	9,41

No publication or circulation of data to third parties without consent of VARTA Consumer Batteries

* In consideration of typical loss of capacity at storage and application.